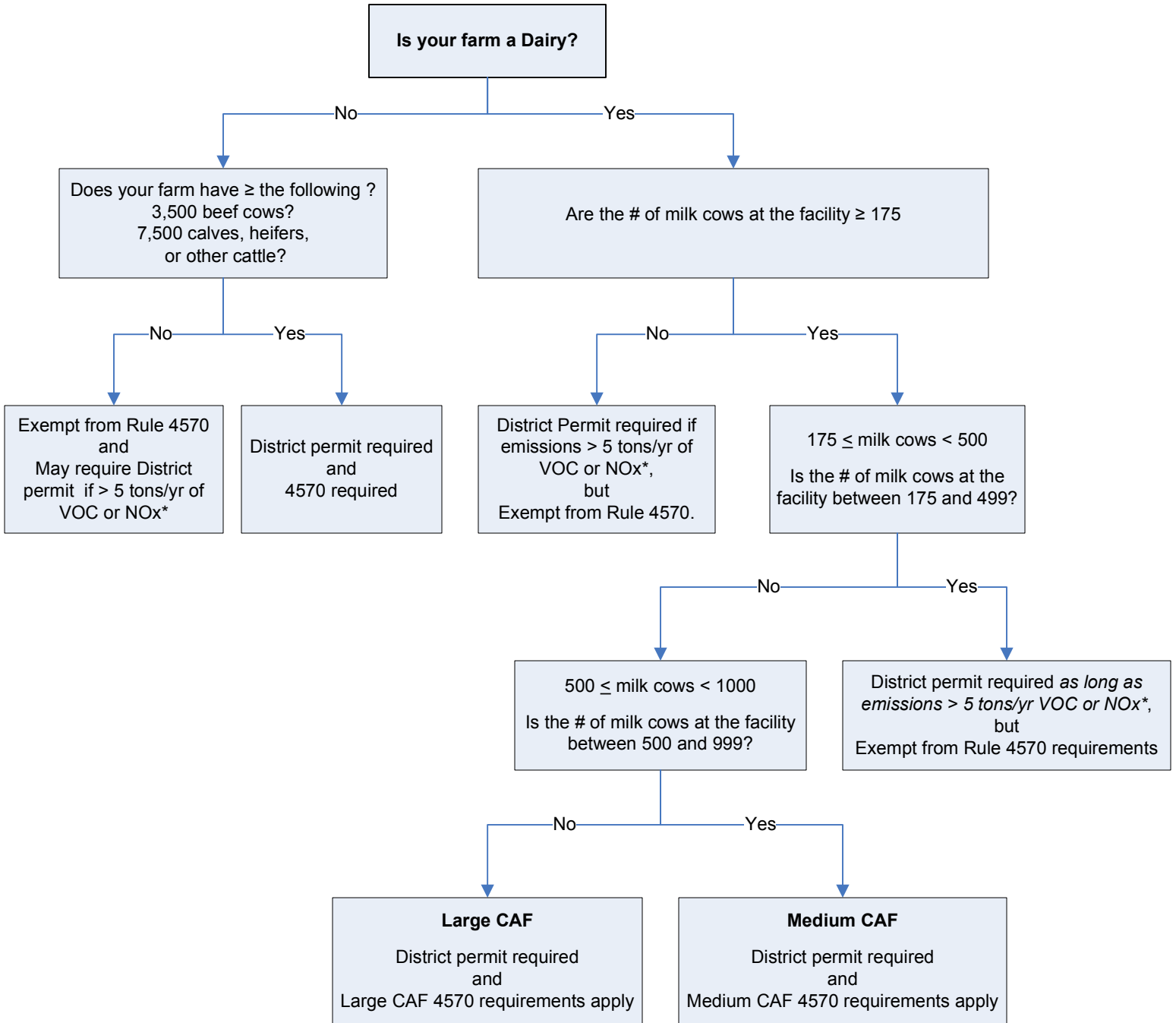


**GENERAL GUIDELINE FOR DETERMINING PERMIT AND RULE 4570
APPLICABILITY FOR DAIRY AND OTHER OPERATIONS**

3-9-2011



NOTES

*To determine if emissions exceed 5 tons/yr of VOC or NOx, emission calculations need to be performed. The emission calculation should include any engines and gasoline tanks at the facility. The calculator can be found at the following address:
http://www.valleyair.org/General_Info/AGLoader.htm

Reminder: If you plan on modifying or expanding your dairy, you must file for and receive an Authority to Construct (ATC) permit from the District prior to the modification